

Vaisala Runway Weather Information System (RWIS)



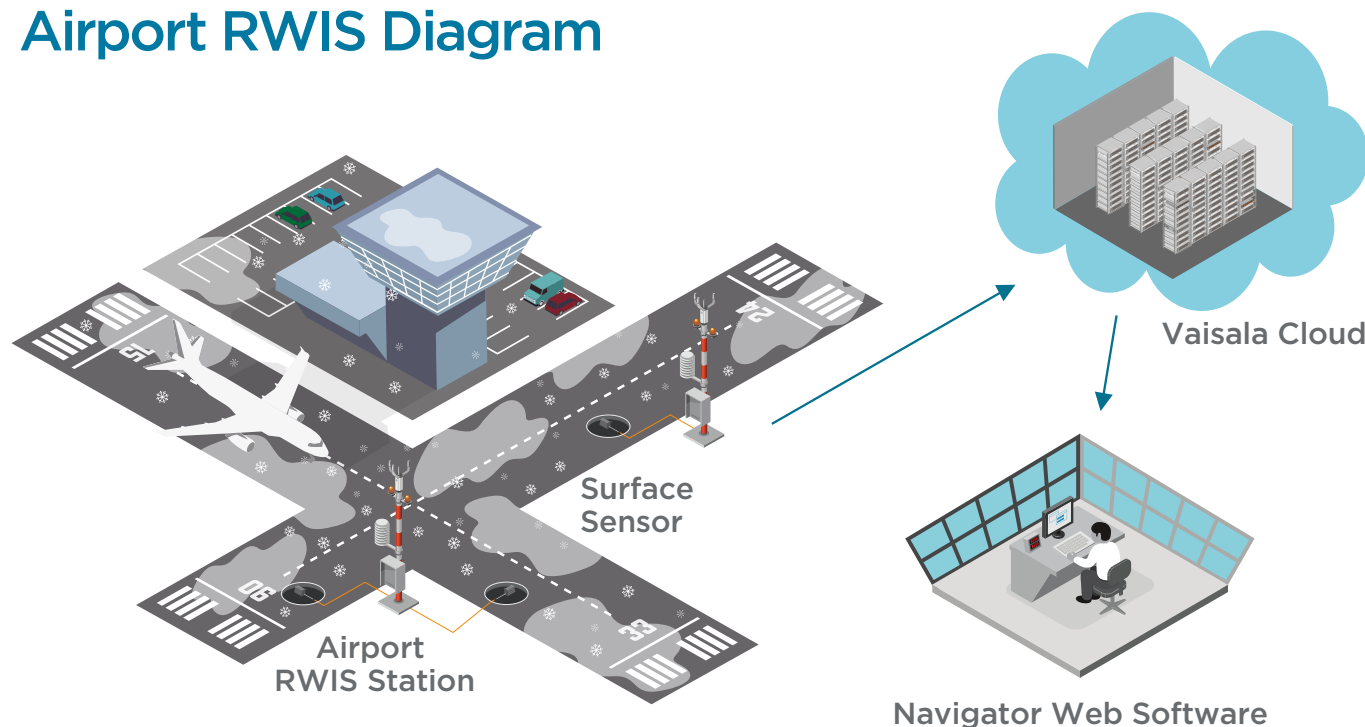
Benefits

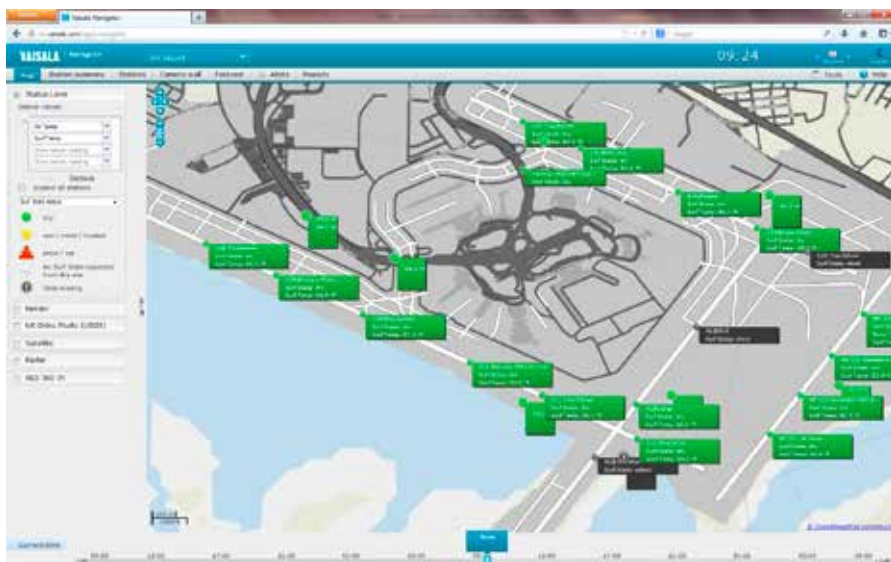
- Reduces runway maintenance costs
- Reduces chemical application based on reported conditions
- Improves decision making and makes critical decisions easier
- Ease of use lowers amount of training time required

Winter weather impacts our runways and taxiways very differently than it impacts the atmosphere, so measuring specific runway conditions is critical. Accurate, real-time weather monitoring of the runways and taxiways is one of the most cost-effective ways to ensure safe, continuous airport operations. The Vaisala Runway Weather Information System (RWIS) is designed to provide airport staff with critical information to make informed decisions about treating, clearing, and maintaining the airport surface.

An RWIS system consists of in-pavement sensors, sub-surface temperature probes, and a full suite of atmospheric sensors. Data from all sensors are collected and processed in an on-field remote processing unit (RPU). The data from an RWIS system provides accurate and reliable information to improve the timing of airport maintenance deicing applications. Deicing chemical's effectiveness is determined by the surface temperature and not the air temperature.

Airport RWIS Diagram





Vaisala Navigator User Software



RWIS installed on an airfield – weather station with sensor suite (atmospherics)

Navigator Cloud Software

Vaisala's unique cloud option enhances the RWIS user display by adding our proprietary IceBreak pavement forecasting model. Using the secure Vaisala Cloud also provides worry free operations to the airport, decreasing downtime and eliminating the need for an on-site server. Vaisala becomes the airport's weather partner by collecting RWIS reports, remotely monitoring the system and sensors, and archiving all data in our sophisticated redundant data centers. The Cloud allows you to feel safe that your data is protected, and available from anywhere you have internet, not just inside the airport network at the airport.

Forecasting

In addition to the IceBreak forecast model, Vaisala offers full forecasting services. Custom forecasts are generated for each airport customer and are delivered daily, including a daily outlook, 24-hour forecast, and 2-5 day forecast. Meteorological Consultants are available 24/7/365 for telephone and email consultations, and provide email, telephone, or text message alerts in case of weather events. Vaisala's forecasting services are flexible and customizable to the airport's particular needs.

Maintenance

Vaisala offers a comprehensive maintenance program that includes: remote monitoring, 24-hour telephone support, onsite support for outages, and replacement of failed components.

VAISALA

www.vaisala.com

Please contact us at
www.vaisala.com/requestinfo



Scan the code for
more information

Ref. B211121EN-D ©Vaisala 2016

This material is subject to copyright protection, with all copyrights retained by Vaisala and its individual partners. All rights reserved. Any logos and/or product names are trademarks of Vaisala or its individual partners. The reproduction, transfer, distribution or storage of information contained in this brochure in any form without the prior written consent of Vaisala is strictly prohibited. All specifications — technical included — are subject to change without notice.

